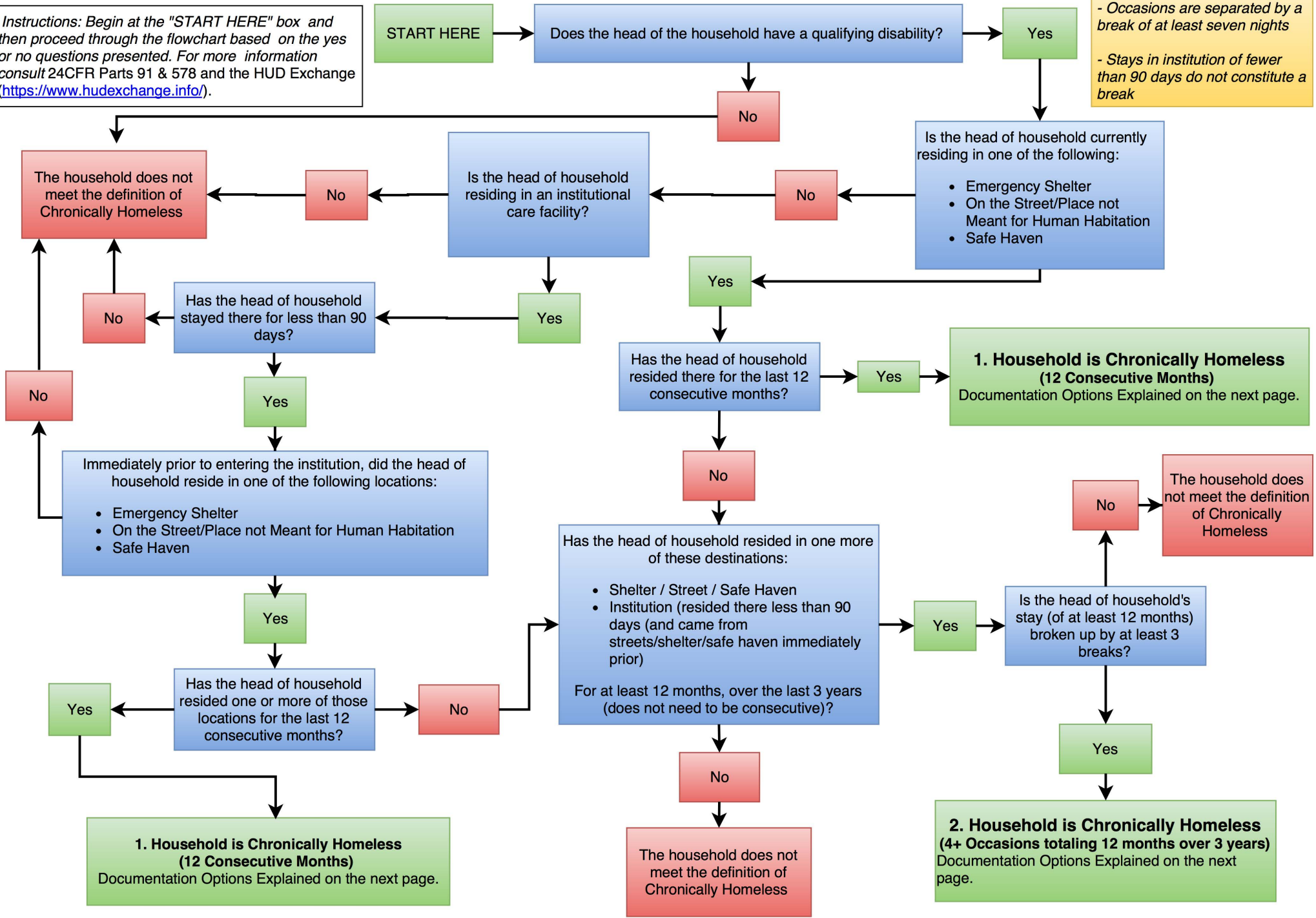




# Flowchart of HUD's Definition of Chronic Homelessness

Instructions: Begin at the "START HERE" box and then proceed through the flowchart based on the yes or no questions presented. For more information consult 24CFR Parts 91 & 578 and the HUD Exchange (<https://www.hudexchange.info/>).

**Remember:**  
- Occasions are separated by a break of at least seven nights  
- Stays in institution of fewer than 90 days do not constitute a break



**1. Household is Chronically Homeless (12 Consecutive Months)**  
Documentation Options Explained on the next page.

**1. Household is Chronically Homeless (12 Consecutive Months)**  
Documentation Options Explained on the next page.

**2. Household is Chronically Homeless (4+ Occasions totaling 12 months over 3 years)**  
Documentation Options Explained on the next page.

The household does not meet the definition of Chronically Homeless

The household does not meet the definition of Chronically Homeless



# Documentation Standards for Chronic Homelessness

**Instructions:** Based on your navigation of the flowchart on the previous page, locate the appropriate numbered situation on this page and follow the documentation standards noted. This tool summarizes the criteria for the new Chronically Homeless Definition. To review the exact language, please refer to 24 CFR Parts 91 & 578 and the HUD Exchange (<https://www.hudexchange.info/homelessness-assistance/resources-for-chronic-homelessness/>)

Situation	Documentation of Homelessness	Documentation of Disability
<p><b>1. Household is Chronically Homeless</b></p> <p>(12 Consecutive Months)</p>	<ul style="list-style-type: none"> <li><input type="checkbox"/> HMIS record or record from a comparable database; or</li> <li><input type="checkbox"/> Written observation by an outreach worker of the conditions where the individual was living; or</li> <li><input type="checkbox"/> Written referral by another housing or service provider; or</li> <li><input type="checkbox"/> Where the evidence above is unavailable, there must be a certification by the individual seeking assistance, accompanied by the intake worker's documentation of the living situation and the steps taken to obtain the evidence listed above.</li> </ul> <p>If the head of household is currently staying in an institution where they have been for less than 90 days (and were in a shelter/street/safe haven immediately prior) their Institutional Stay can be documented by:</p> <ul style="list-style-type: none"> <li><input type="checkbox"/> Discharge paperwork or written/oral referral from a social worker or appropriate official of the institutional facility, with start/end dates of client's residence, or</li> <li><input type="checkbox"/> Where the evidence above is unavailable, there must be a certification by the individual seeking assistance, accompanied by the intake worker's documentation of the living situation and the steps taken to obtain the evidence listed above.</li> </ul>	<p>Documentation of the head of household's disability, including:</p> <ul style="list-style-type: none"> <li><input type="checkbox"/> Written verification of the disability from a licensed professional;</li> <li><input type="checkbox"/> Written verification from the Social Security Administration;</li> <li><input type="checkbox"/> The receipt of a disability check; or</li> <li><input type="checkbox"/> Intake staff-recorded observation of disability that, no later than 45 days from the application for assistance, accompanied by supporting evidence.</li> </ul>
<p><b>2. Household is Chronically Homeless</b></p> <p>(4+ Occasions totaling 12 months over 3 years)*</p> <p><i>*May include institution stays of &lt;90 days</i></p>	<ul style="list-style-type: none"> <li><input type="checkbox"/> HMIS record or record from a comparable database; or</li> <li><input type="checkbox"/> Written observation by an outreach worker of the conditions where the individual was living; or</li> <li><input type="checkbox"/> Written referral by another housing or service provider; or</li> <li><input type="checkbox"/> Discharge paperwork or written/oral referral from a social worker or appropriate official of the institutional facility, with start/end dates of client's residence (for institutional stays of less than 90 days)</li> <li><input type="checkbox"/> Where the evidence above is unavailable, there must be a certification by the individual seeking assistance, accompanied by the intake worker's documentation of the living situation and the steps taken to obtain the evidence listed above.</li> </ul> <p><i>* Each separate occasion MUST be documented (minimum of 3 breaks). 100% of the breaks can be documented by self- report.</i></p>	<p>Documentation of the head of household's disability, including:</p> <ul style="list-style-type: none"> <li><input type="checkbox"/> Written verification of the disability from a licensed professional;</li> <li><input type="checkbox"/> Written verification from the Social Security Administration;</li> <li><input type="checkbox"/> The receipt of a disability check; or</li> <li><input type="checkbox"/> Intake staff-recorded observation of disability that, no later than 45 days from the application for assistance, accompanied by supporting evidence.</li> </ul>

**Important Notes:**

- Each individual occasion needs to be fully documented.
- Breaks can be documented by self-report.
- For each Project:
  - 100% of households served can use self-certification for 3 months of their 12 months,
  - 75% of households served need to use 3<sup>rd</sup> Party documentation for 9 months of their 12 months, and
  - 25% of households served can use self-certification as documentation for any and all months.